

Série VP18 G 1/8" Muscular

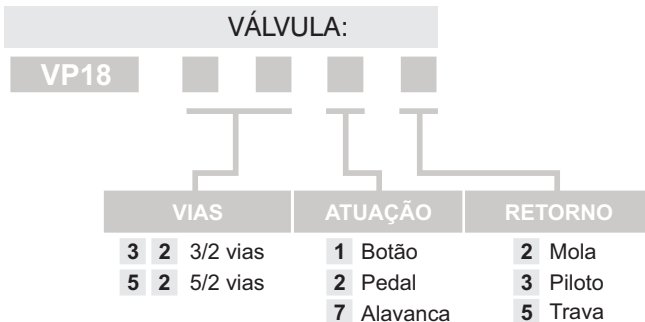
Características:

TIPO:	Válvulas direcionais 5/2 e 3/2 com atuação muscular, pedal, alavanca e botão.
PRESSÃO DE TRABALHO:	até 10,5kgf/cm²
TEMPERATURA:	-10°C a +80°C
FLUÍDO:	Ar filtrado e lubrificado
LUBRIFICAÇÃO:	ISO8 ou ISO10
VAZÃO:	580 l/min
MATERIAL:	Alumínio, Latão, Aço Inox, Zamac e Buna-N
TIPO CONSTRUTIVO:	Spool (universal)
CONEXÕES:	Vias G 1/8"
MONTAGEM:	Nos modelos botão e alavanca trava através do pescoço e no modelo pedal através de orelhas laterais. Todas contam com furos laterais nos corpos. Montagem em qualquer posição.
SIMBOLOGIA:	Vide dimensional.



7

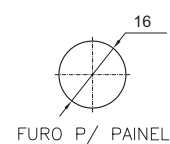
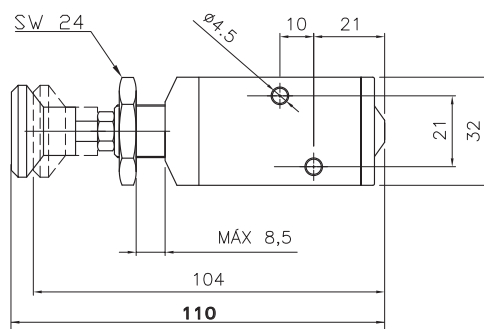
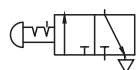
Codificação:



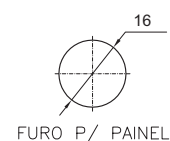
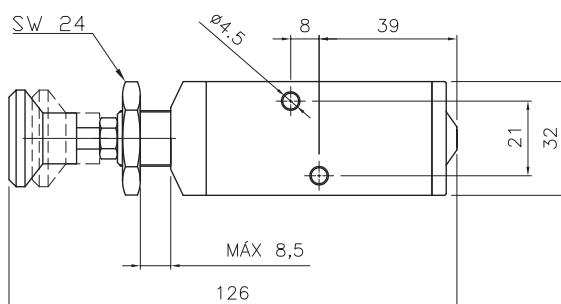
Série VP18 G 1/8" Muscular

Dimensional:

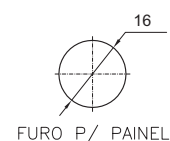
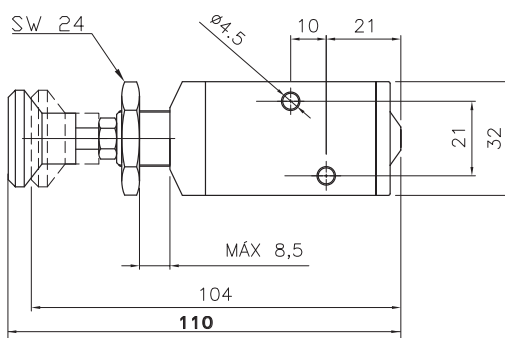
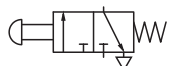
VP183215



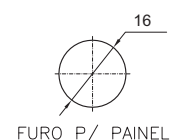
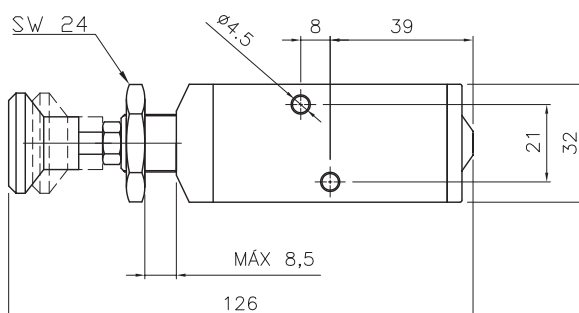
VP185215



VP183212



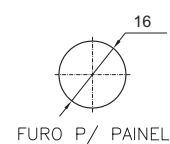
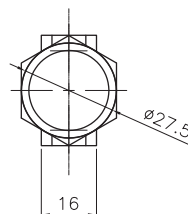
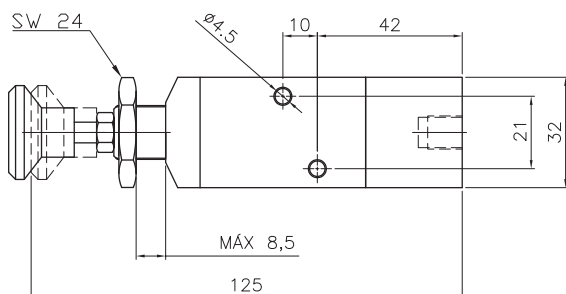
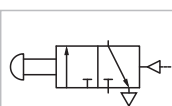
VP185212



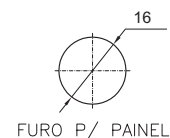
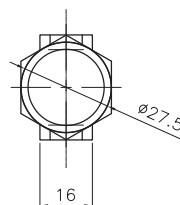
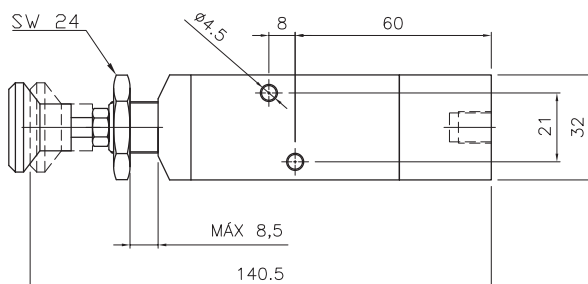
Série VP18 G 1/8" Muscular

Dimensional:

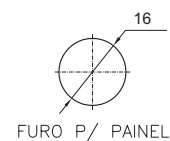
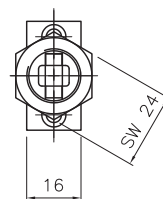
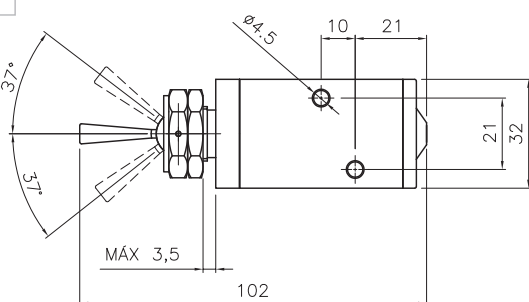
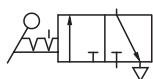
VP183213



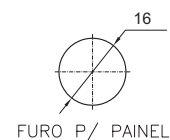
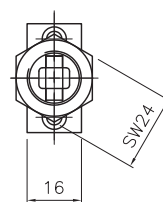
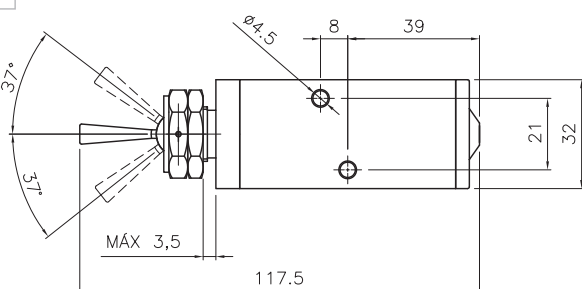
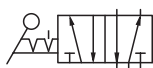
VP185213



VP183275



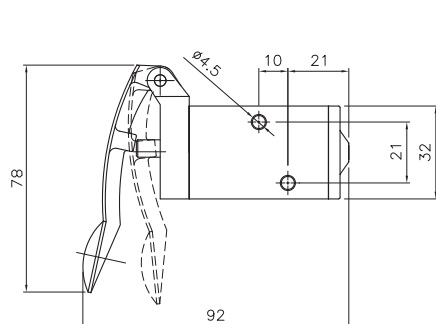
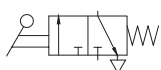
VP185275



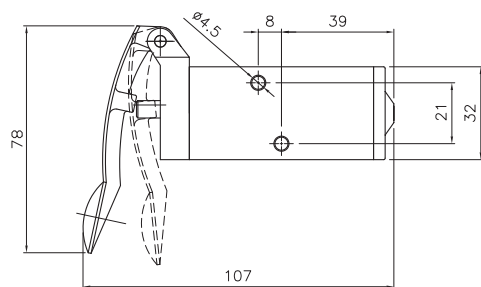
Série VP18 G 1/8" Muscular

Dimensional:

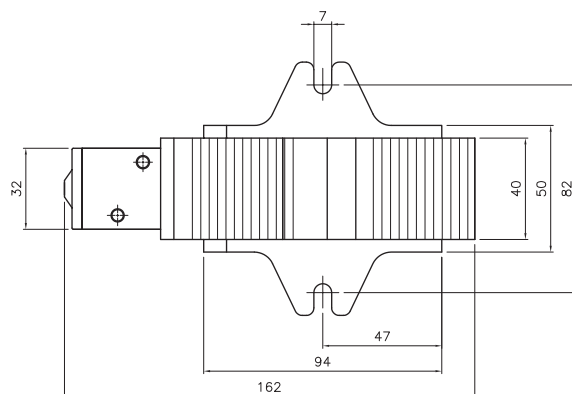
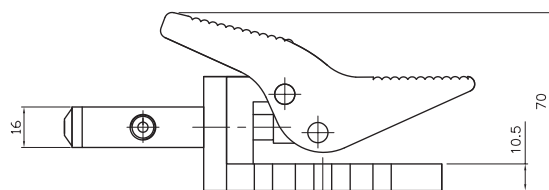
VP183272



VP185272



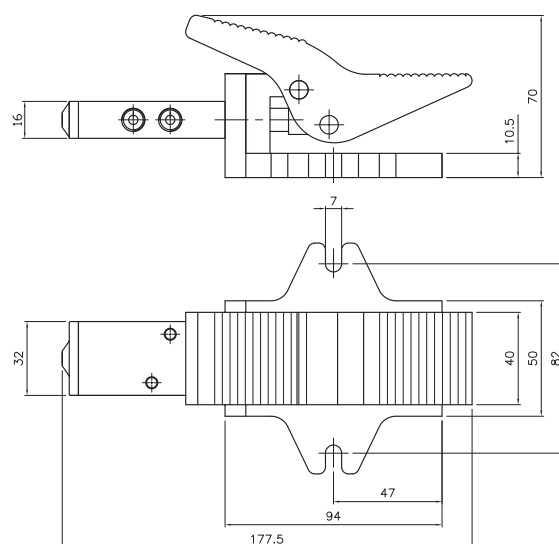
VP183222/VP183225



Série VP18 G 1/8" Muscular

Dimensional:

VP185222/VP185225



VP185223

